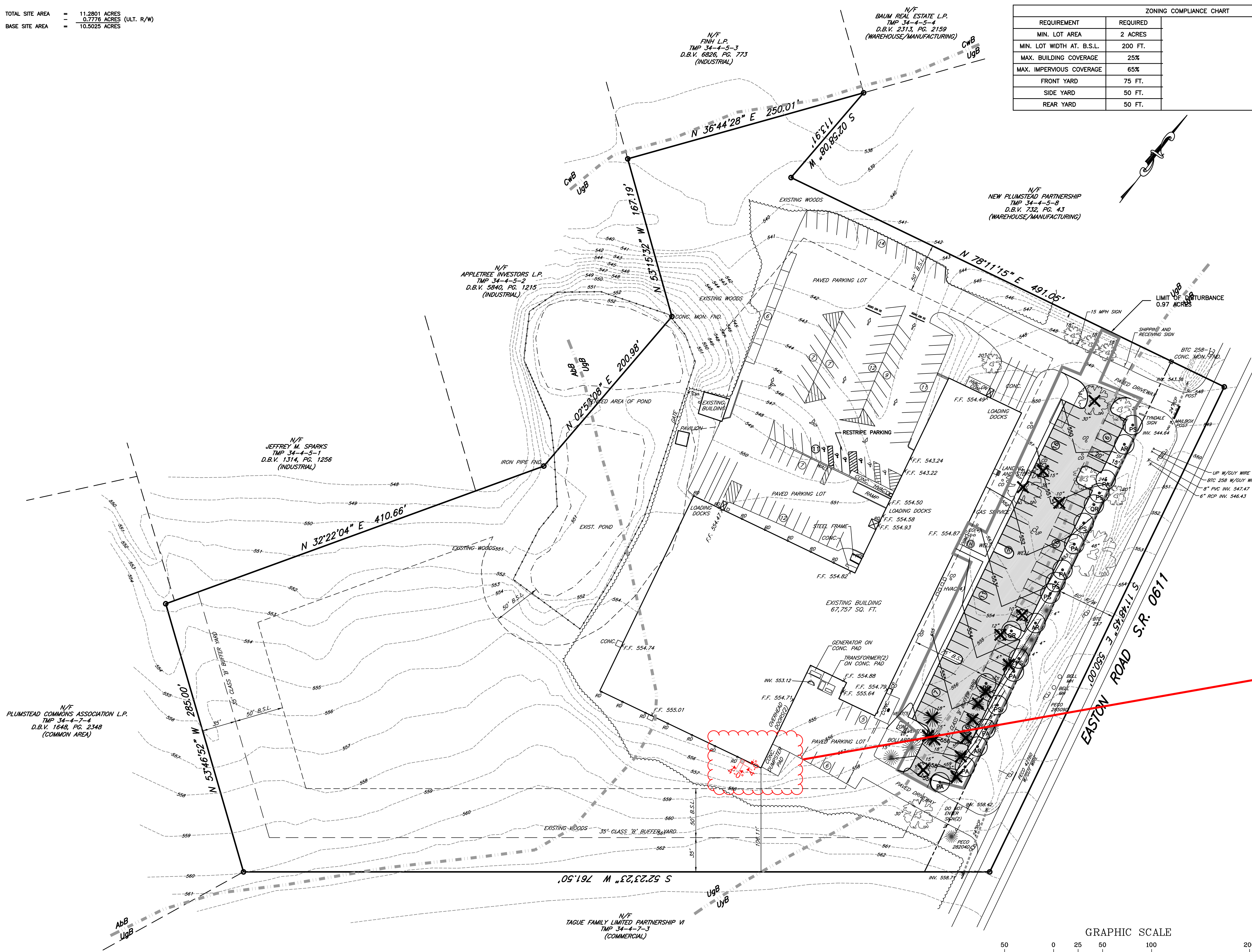
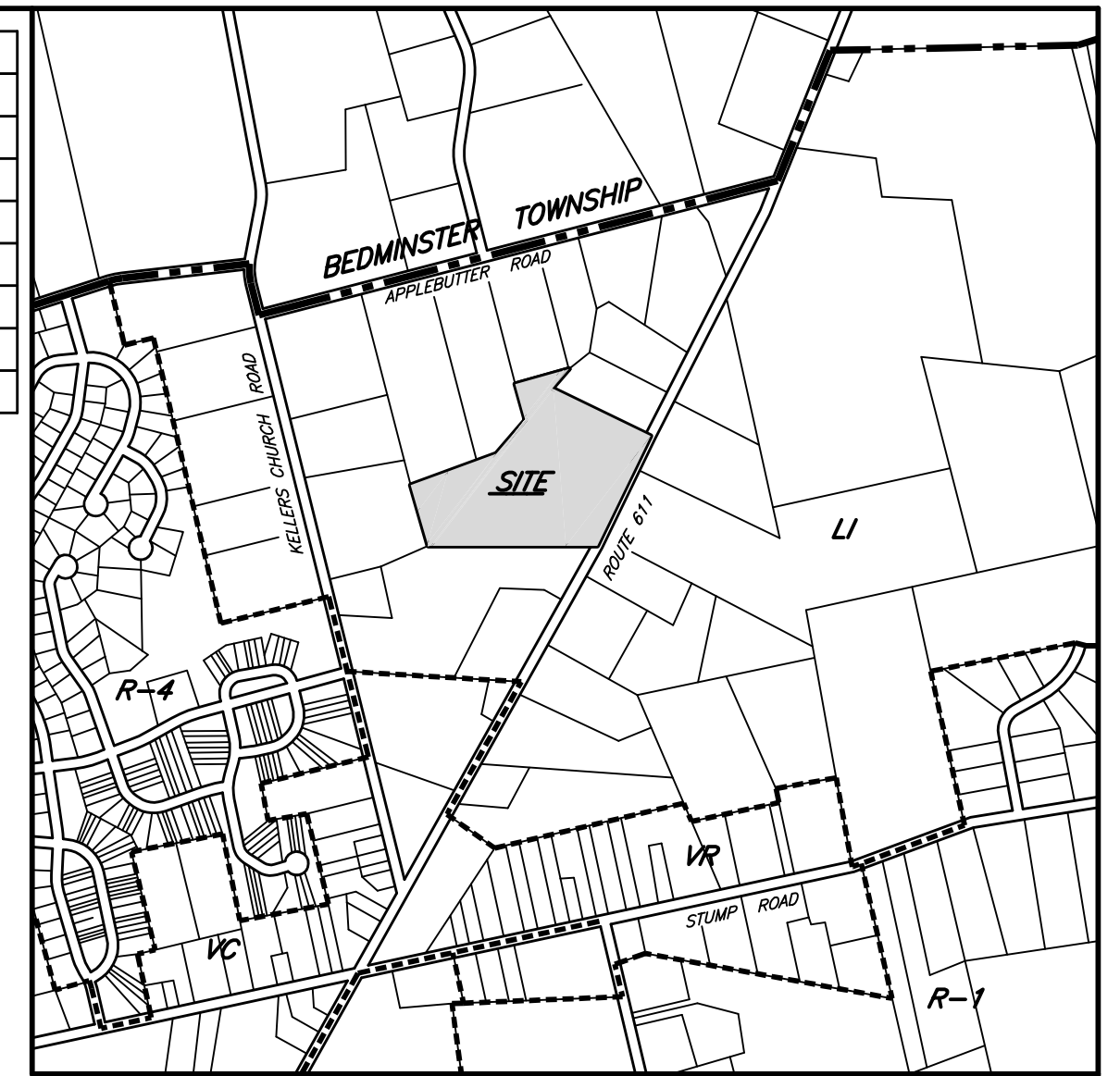
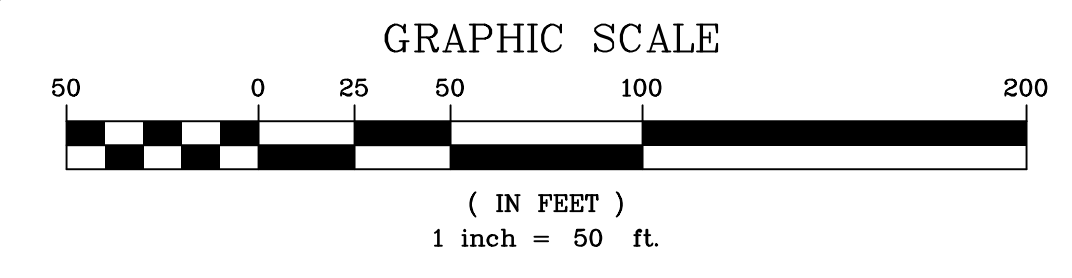
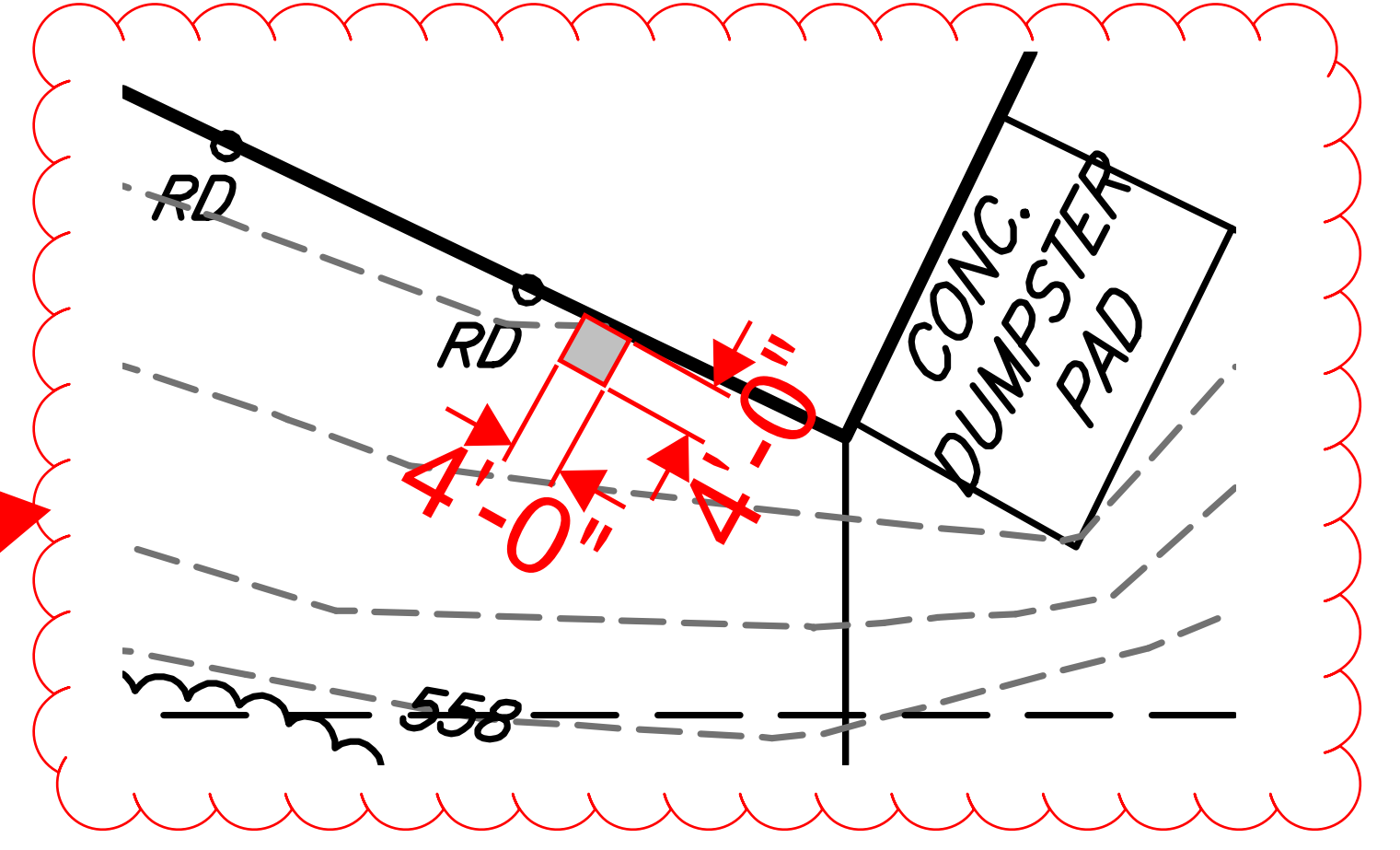


TOTAL SITE AREA = 11.2801 ACRES (ULT. R/W)  
 = 0.7776 ACRES  
 BASE SITE AREA = 10.5025 ACRES

ZONING COMPLIANCE CHART		
REQUIREMENT	REQUIRED	EXISTING
MIN. LOT AREA	2 ACRES	10.5025 ACRES
MIN. LOT WIDTH AT B.S.L.	200 FT.	615.25 FT.
MAX. BUILDING COVERAGE	25%	14.98% (68,536 SQ. FT.)
MAX. IMPERVIOUS COVERAGE	65%	38.11% (174,342 SQ. FT.)
FRONT YARD	75 FT.	114.65 FT.
SIDE YARD	50 FT.	113.88 FT.
REAR YARD	50 FT.	136.02 FT.



Approximate location of new 4'x4' structure to enclose vertical section of new 8" fire water service and 2" domestic water service piping. New water laterals were shown on the previously approved & completed water service drawings.



NO.	DATE	REVISIONS	BY	CHK.
PREPARED FOR <b>TYNDALE CORPORATION</b> 6120 EASTON ROAD PLUMSTEAD TOWNSHIP, BUCKS COUNTY, PENNSYLVANIA				
DRAWN BY	SURVEY CHK. BY	DWC. NO.		
FINAL CHK. BY	PROJECT ENGINEER	<b>1</b>		
DATE	SCALE	OF 1		
	1"=50'			